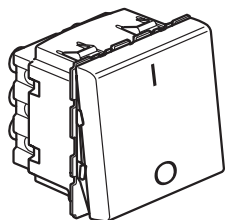
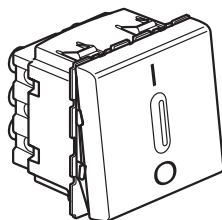


## Mosaic™ 20 AX control

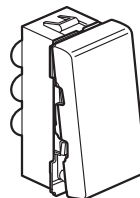
Cat. No(s): 770 50/52/60/62/63/64



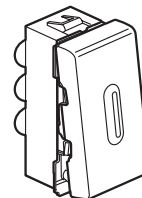
770 50



770 52



770 60

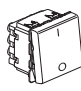

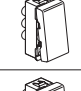
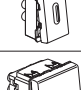
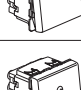



770 62

### 1. USE

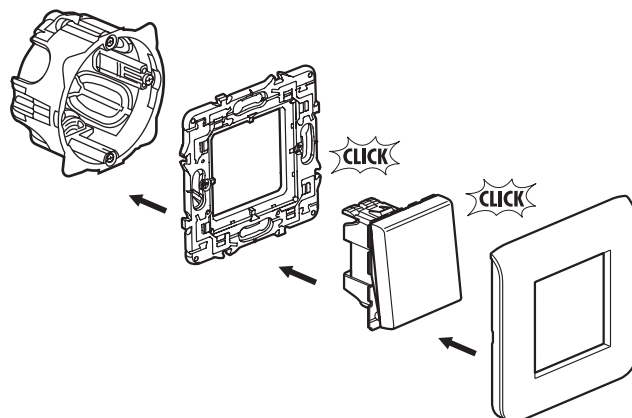
Lighting control mechanisms, generally with, or without signalling elements.

### 2. RANGE

	Designation	Cat. No.	No. of modules	Connection methods	Weight (g)	Caractéristiques
	Two-pole switch	770 50	2	with screws	42	20 AX - 250 V~
	Two-pole switch with indicator light	770 52	2	with screws	42	20 AX - 250 V~
	20 AX two-way switch	770 60	1	with screws	20	20 AX - 250 V~
	20 AX two-way switch with indicator light	770 62	1	with screws	20	20 AX - 250 V~
	20 AX Two-pole Two-way switch	770 63	2	with screws	42,2	20 AX - 250 V~
	20 AX Two-pole Two-way switch with indicator light	770 64	2	with screws	42,7	20 AX - 250 V~

### 3. PREPARATION

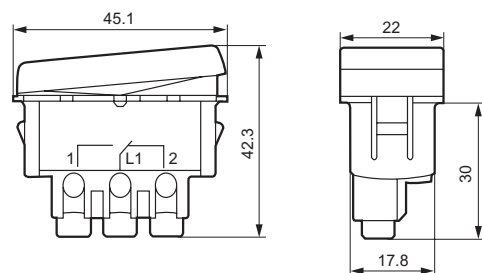
Modular mechanisms using adapter Cat. No. 802 99 (2 modules).  
The mechanisms are mounted on thin walls using adapters Cat. No. 802 90 (1 module), Cat. No. 802 91 (2 modules), Cat. No. 802 92 (2 x 1 vertical module).  
The mechanisms can be flush-mounted or surface-mounted.



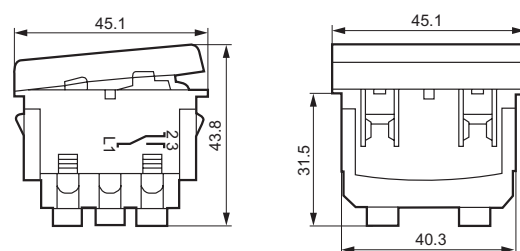
The mechanisms can be flush-mounted or surface-mounted.

### 4. OVERALL DIMENSIONS

770 50/52



770 60/62/63/64



# Mosaic™ 20 AX control

Cat. No(s): 770 50/52/60/62/63/64

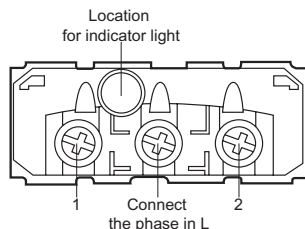
## 5. CONNECTION

Terminal type: Screw terminals

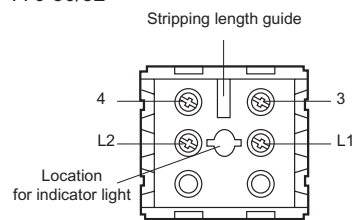
Min. terminal capacity: 2 x 4 mm²

Type of screwdriver: Posidrive 1, Philips 1, Flat blade 4 mm

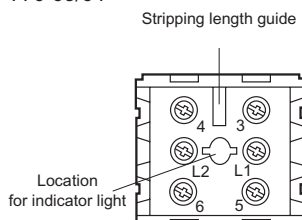
770 60/62



770 50/52



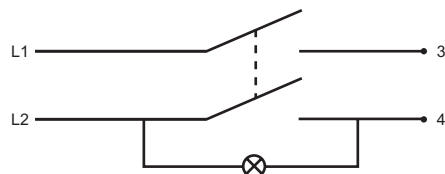
770 63/64



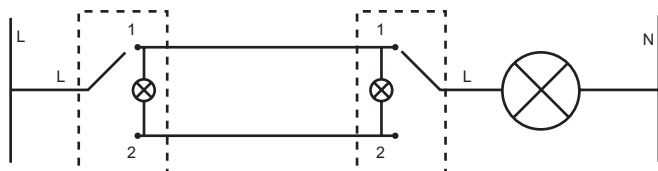
### 5.1 Wiring

Illuminated function: illuminates the switch in the dark.

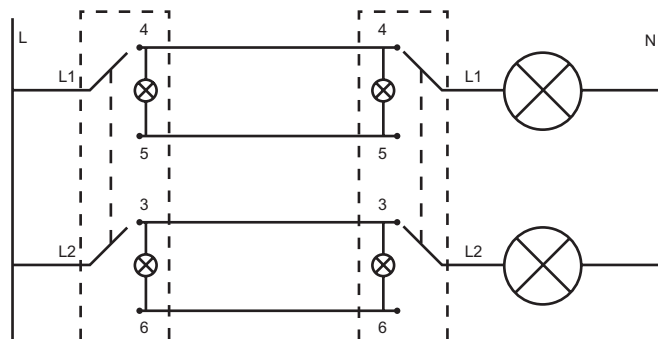
Cat. Nos. 770 50/52



Cat. Nos. 770 60/62\*



Cat. Nos. 770 63/64\*



\*Illuminated function mounting not advised with this type of indicator light.

The indicator light's energy consumption should be taken into account.

## 6. OPERATION

Switch mechanism (handling force 2 to 3 N).

## 7. TECHNICAL CHARACTERISTICS

### 7.1 Mechanical characteristics

Impact tests: IK 04

Penetration by solid/liquid bodies: IP 31 (C15100)

### 7.2 Material characteristics

Rocker: ABS (RAL 9003)

Base: Polycarbonate

Rocker support: Polycarbonate

### 7.3 Electrical characteristics

Self-extinguishing: 650° C / 30 s

Voltage: 250 V

Current: 20 AX

### 7.4 Climatic characteristics

Storage temperatures: - 10° C to + 70° C

Operation temperature: - 5° C to + 50° C

## 8. CLEANING

Surface cleaning with a cloth.

Do not use : acetone, tar remover, trichloroethylene.

### 8.1 Resistance to cleaning agents

Resistance to the following agents : Hexane (EN60669-1), Methylated spirits, Soapy water, Diluted ammonia, Diluted pure bleach 10%, Glass cleaning substance, Pre-impregnated wipes.

### 8.2 Resistance to hospital-type cleaning agents

Resistance to the following agents: Anios, Surfanios, Bactilysine, Diluted hydrogen peroxide (35%).

**Caution:** A preliminary test should be carried out if other specific cleaning products are to be used.

## 9. ACCESSORIES

Light for switches with indicator light: Cat. No. 676 64 (230 V - 2.4 mA)

## 10. CONFORMITY - APPROVALS

Approvals in process: NF - CEBEC - BBJ