

**MONTAGERAIL**

**40/60x2.00 VERZINKT**



**Zinc  
Plated**

**40x60x2.50 mm**

### **Description**

The fixing rail is used for the fixing of pipe and air conditioning distribution systems and electric paths.

Fixing rails are designed for indoor installation.

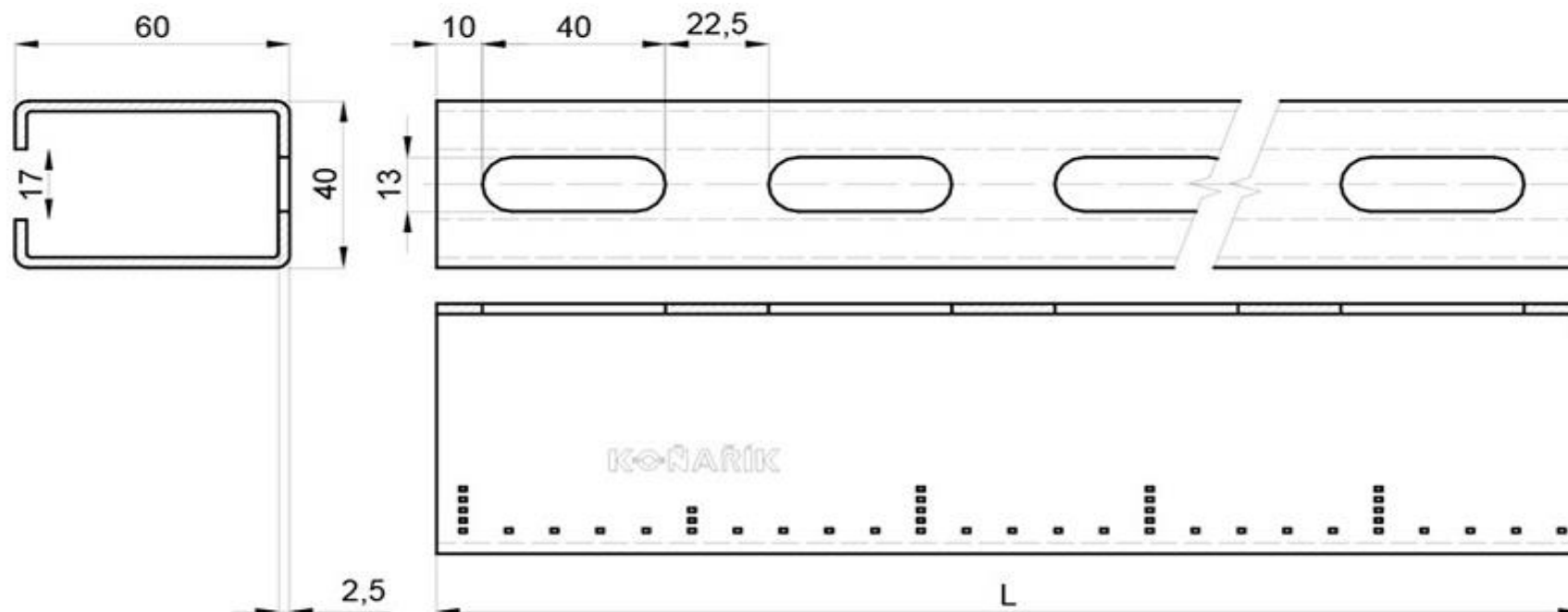
For outdoor installation it is necessary to choose the surface coating of hot dip galvanizing or stainless steel.

### **Advantages:**

- The fixing rail can be fixed in many different ways to walls, ceilings and floors thanks to different geometry of openings.
- A wide range of accessories is offered for the fixing of the fixing rails.

### **Technical data**

- Surface coating: electro zinc plated steel

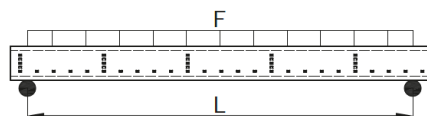


Fabr. Partnr.	WT ARTIKELNUMMER			Afmetingen in MM				Materiaal	Inhoud					
	Industrial pack Fabric pack	WT system Retail pack	WT system Small pack	Langte	Breedte	Hoogte	Dikte		I-pack/pcs Pack Carton		R-pack/pcs Pack Carton		S-pack/pcs Pack Carton	
31404060	IRVCIZ4-40606000-001			6000	40	60	2.5	Verzinkt	1	10				

# Load values for the fixing rails

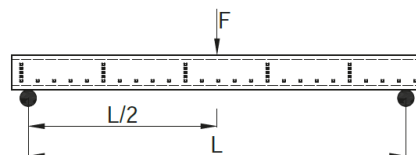
$$10 \text{ N} = 1 \text{ kg}$$

## Uniform load



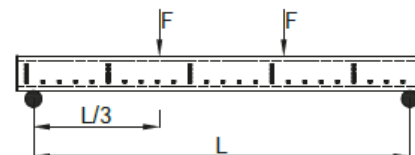
L (mm)	Nosnik 40/60 Fixing rail 40/60 F (N)
250	-
300	-
350	-
400	14 727
450	13 091
500	11 782
600	9 817
700	8 415
800	7 363
900	6 545
1000	5 890
1200	4 909
1400	4 207
1600	3 682
1800	3 272
2000	2 946
2250	2 619
2500	2 356
2750	2 143
3000	1 963
3250	1 814
3500	1 683
3750	1 571
4000	1 473
4250	1 386
4500	1 309
4750	1 241
5000	1 178
5250	1 122
5500	1 071
5750	1 025
6000	982

## Load at 1 point



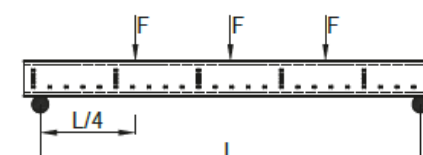
L (mm)	Fixing rail 40/60 F (N)
250	11 782
300	9 817
350	8 415
400	7 363
450	6 545
500	5 868
600	4 909
700	4 207
800	3 682
900	3 272
1000	2 946
1200	2 454
1400	2 104
1600	1 841
1800	1 637
2000	1 473
2250	1 310
2500	1 178
2750	1 071
3000	982
3250	906
3500	842
3750	787
4000	736
4250	694
4500	654
4750	620
5000	589
5250	561
5500	535
5750	513
6000	491

## Equal concentrated loads at 2 points



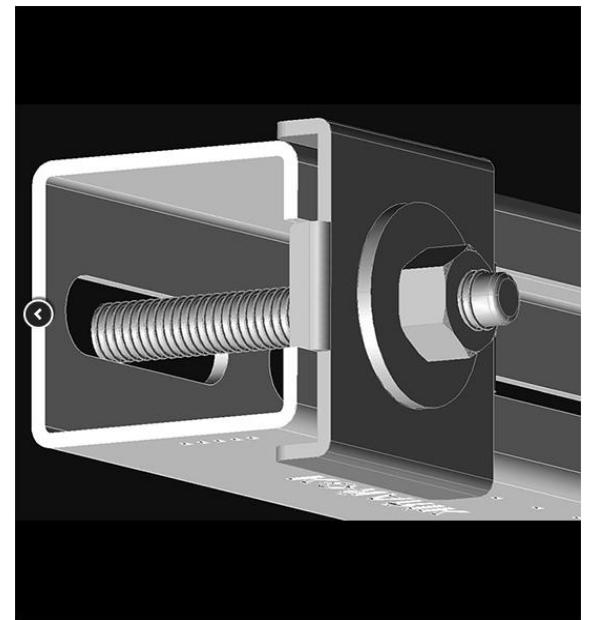
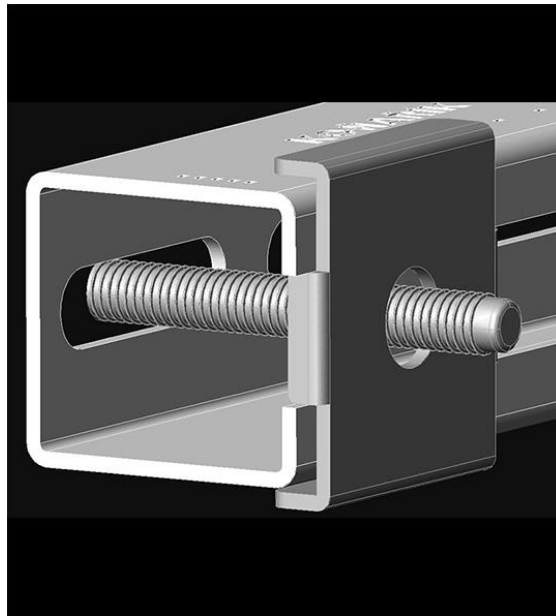
L (mm)	Fixing rail 40/60 F (N)
250	7 736
300	7 363
350	6 312
400	5 523
450	4 909
500	4 418
600	3 682
700	3 156
800	2 761
900	2 454
1000	2 209
1200	1 841
1400	1 577
1600	1 381
1800	1 227
2000	1 104
2250	982
2500	883
2750	804
3000	736
3250	681
3500	631
3750	590
4000	552
4250	520
4500	491
4750	465
5000	443
5250	421
5500	401
5750	384
6000	368

## Equal concentrated loads at 3 points

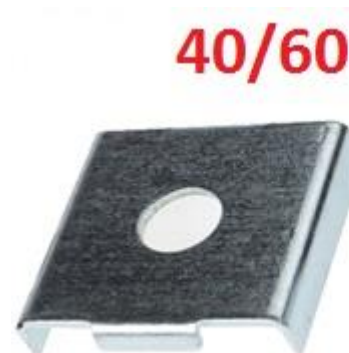


L (mm)	Fixing rail 40/60 F (N)
250	5 890
300	4 909
350	4 207
400	3 682
450	3 272
500	2 946
600	2 454
700	2 104
800	1 841
900	1 637
1000	1 473
1200	1 228
1400	1 052
1600	921
1800	818
2000	736
2250	656
2500	590
2750	536
3000	491
3250	453
3500	421
3750	393
4000	391
4250	346
4500	328
4750	310
5000	295
5250	280
5500	267
5750	256
6000	245

How to use :



GEBRUIK DEZE BEVESTIGINGSMATERIALEN :



Voor  
M12